

## ATW0002

Aptamer to Human Collagen

### Selection Information

**Target for Selection:** Collagen from human placenta, Sigma # C7774

**Number of DNA Nucleotides:** 40

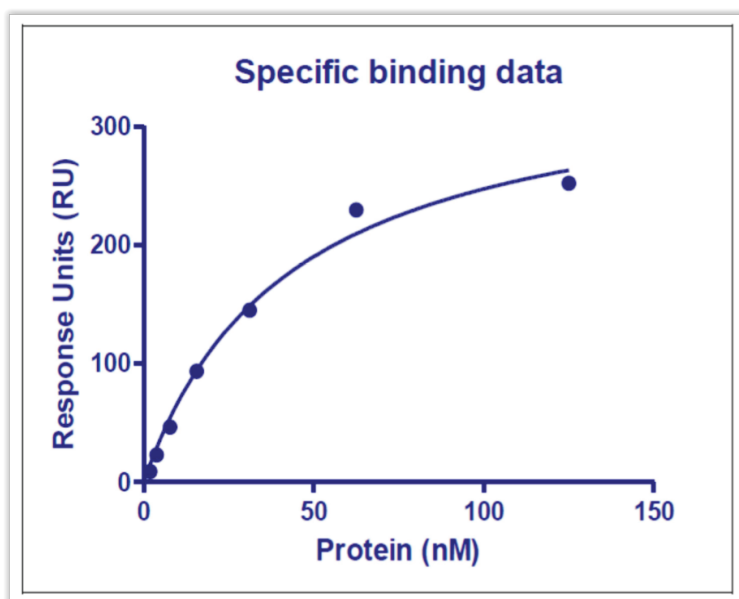
Aptamers were selected from a randomized Base Pair 40-mer DNA library against the target protein. Proprietary methods were used to select this specific aptamer sequence.

### Affinity Determination

**Affinity Determination Method:** Surface Plasmon Resonance (SPR)

**Buffer Used for Affinity Determination:** 20 mM Tris, 100 mM NaCl, 0.005% Tween, in nuclease-free water, pH 7.4

**Average  $K_D$ :** 42.9 nM



**Figure 1. Aptamer-Collagen Binding**

The response is plotted versus the titrated target concentration

### Aptamer Folding

For optimal binding, aptamers must be folded into their tertiary structure prior to use. Dilute to 10x - 100x working concentration in Folding Buffer, heat to 90-95°C for 5 minutes, then cool to room temperature (~15 minutes)

*For Research Use Only*