

## ATW0007

Aptamer to Human Fibrinogen

### Selection Information

**Target for Selection:** Human plasma fibrinogen, Sigma # F3879

**Number of DNA Nucleotides:** 40

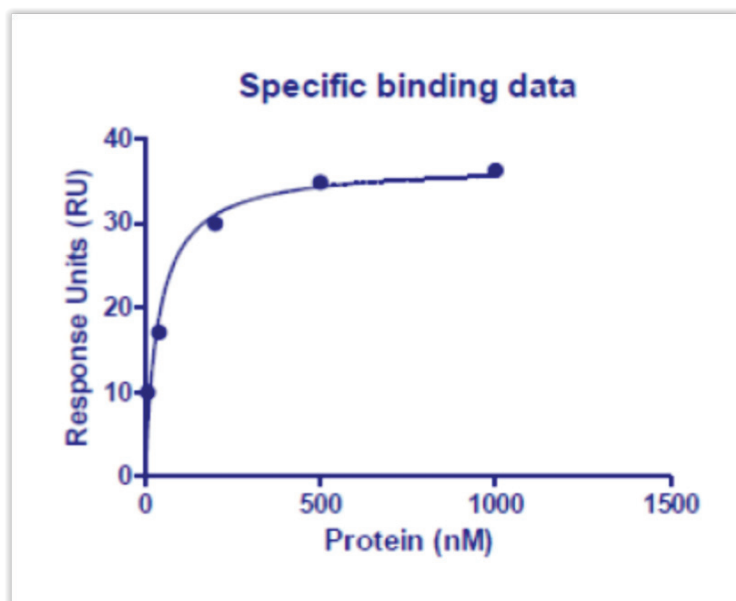
Aptamers were selected from a randomized Base Pair 40-mer DNA library against the target protein. Proprietary methods were used to select this specific aptamer sequence.

### Affinity Determination

**Affinity Determination Method:** Surface Plasmon Resonance (SPR)

**Buffer Used for Affinity Determination:** 20 mM Tris, 100 mM NaCl, 0.005% Tween, in nuclease-free water, pH 7.4

**Average kD:** 38.5 nM



**Figure 1. Aptamer-Fibrinogen Binding**

The response is plotted versus the titrated target concentration

### Aptamer Folding

For optimal binding, aptamers must be folded into their tertiary structure prior to use. Once the aptamer is at its working concentration, heat to 90-95°C for 5 minutes, then cool to room temperature (~15 minutes)

*For Research Use Only*